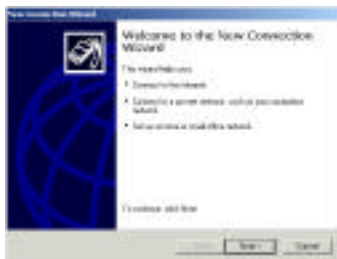


## Windows Xp™ - Dial-Up Connection Setup

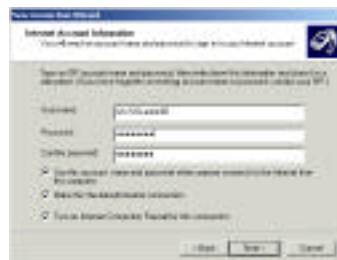
### Xp Dial-Up - Creating a Modem Dial-Up Connection

1. From the **Start** menu, choose **Control Panel**. The Control Panel window appears.
2. Click the **Network and Internet Connections** icon. The Network and Internet Connections window appears.
3. Click **Setup or change your Internet connection**. The Internet Properties window appears.
4. Click the **Setup** button. The New Connection wizard window appears.

5. Click the **Next** button.
6. Click the **Connect to the Internet** button, then click the **Next** button.



7. Click the **Set up my connection manually** button, then click the **Next** button.



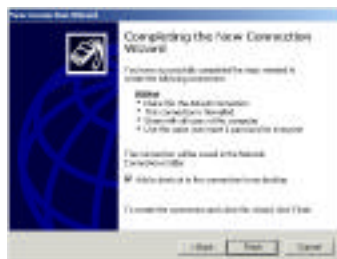
8. Click **Connect using a dial-up modem**, then click the **Next** button.

9. Enter the name of your ISP, then click the **Next** button.

10. Enter the phone number of your ISP, then click the **Next** button.

11. Enter your assigned **User name**, **Password**, **Confirm your password**, then click the **Next** button.

12. Click the **Add a shortcut to this connection to my desktop**, then click the **Finish** button. Your new modem dial-up shortcut icon appears on your desktop.



13. Close the **Network and Internet Connections** window.

## Windows Xp™ Modem Dial-Up

### TeleDaptor Hardware Setup

1. Remove the telephone line from the wall socket.
2. Connect the appropriate duplex TeleDaptor into the wall socket.
3. Plug the telephone jack into the TeleDaptor.
4. Plug your modem cable into the TeleDaptor.
5. Pick up the telephone and check for a dial tone.



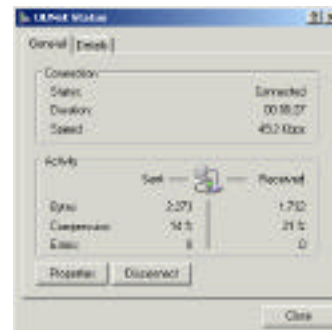
### Windows Xp - Placing a Modem Dial-up Call

1. Double-click the new dial-up icon on your desktop. The **Connect to "Your ISP"** window appears.
2. Enter your ISP (Internet Service Provider) assigned **User name** and **Password**.
3. Click the Dial button. The **Connecting...** window appears with the status of your connection - Dialing, Verifying user name and password, Registering your computer on the network.



4. Launch or web browser to access the web, or open your email program to send and retrieve your email.

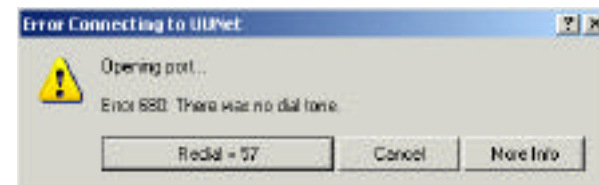
You can check your connection status and modem connect speed by right-clicking the miniature computers icon located in the right-hand corner of your screen and selecting **Status**.



## How to Ignore Foreign Dial tones and Set-up a Dial-Up Networking Modem Connection from Remote Locations

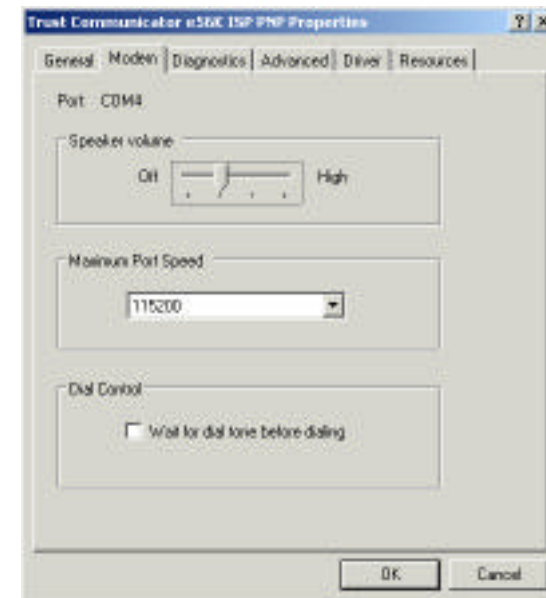
### Foreign Dial Tones

Modems are designed to check for a dial tone before dialing. If a modem does not recognize a dial tone in a foreign country it will return with the "No dial tone" error and fail to dial.



### Setting Windows Xp to Ignore Dial tone

To avoid this common problem, your Xp Dial-Up Networking connections must be set to ignore dial tone. This can be accomplished by unchecking the "Wait for dial tone before dialing" box in the Phone and Modems Options/Modem Properties box, and by adding the ignore dial tone command (X1) to the Modem Properties/Advanced Extra Settings box.



**TeleAdapt - Keeping the world connected**

Tel: UK +44 (0) 20 8233 3000 Fax: +44 (0) 20 8233 3132  
Tel: USA +1 408 350 1440 Fax: +1 408 350 0160

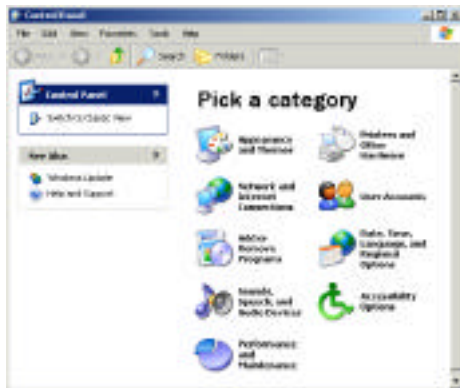
www.teleadapt.com

## Windows Xp - Ignoring Dial tone

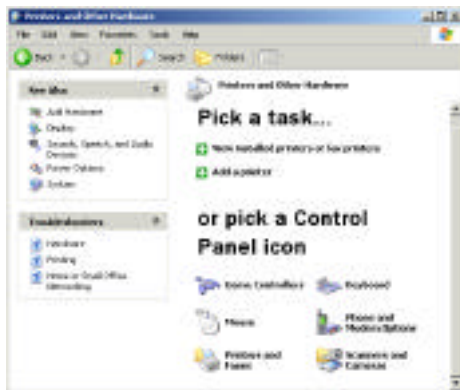
- From the **Start** menu, choose **Control Panel**. The **Control Panel** window appears.



- Click the **Printers and Other Hardware** icon. The **Printers and Other Hardware** window appears.

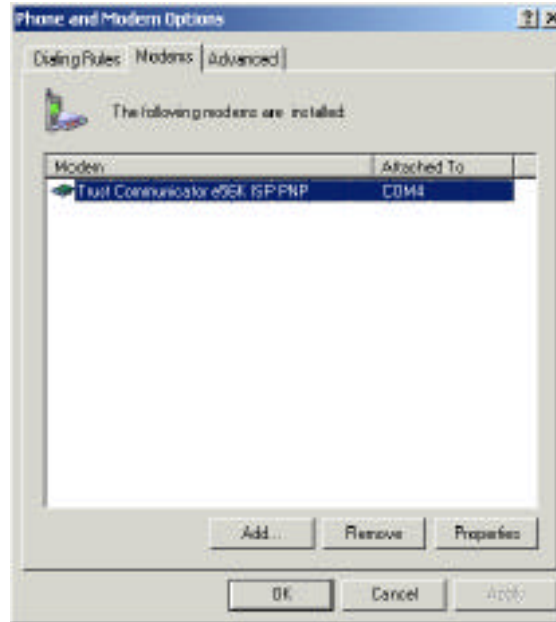


- Click the **Phone and Modem Options** icon. The **Phone and Modem Options** window appears.

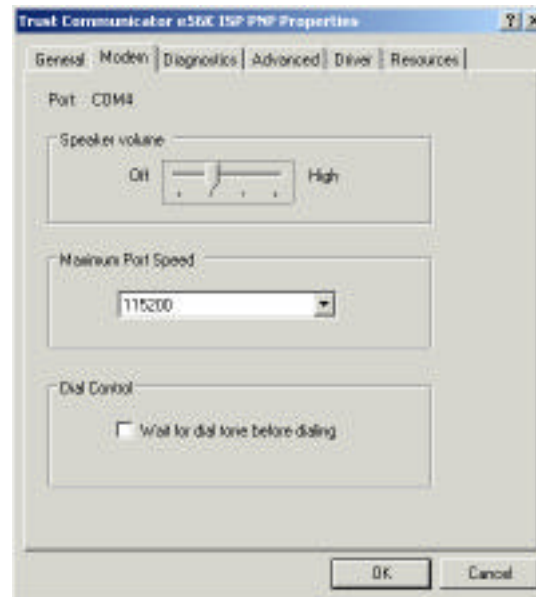


## Windows Xp - Ignoring Dial tone

- Click the **Modem** tab, highlight your modem, then click the **Properties** button. The **Modem Properties** window appears.

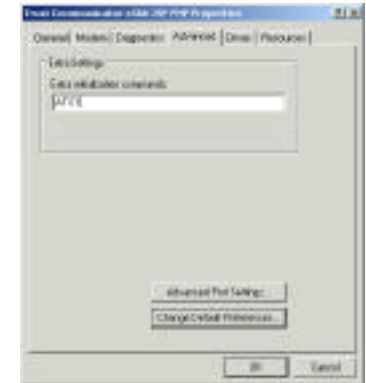


- Click the **Modem** tab, uncheck the **Wait for dial tone before dialing** box, then click the **Advanced** tab. The **Extra Settings** window appears.

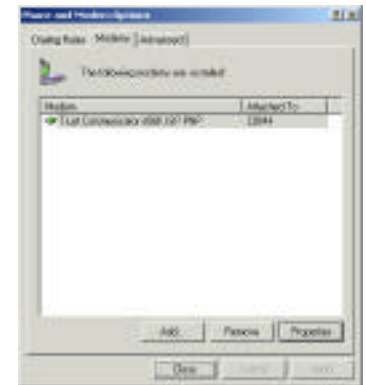


## Windows Xp - Ignoring Dial tone

- In the **Extra settings** box, enter the Hayes AT command to ignore dial tone: **ATX1**
- When completed click the **OK** button. The **Phone and Modems Options** window appears.



- Click the **OK** button. The **Printers and Other Hardware** window appears.



- From the **File** menu choose **Close**. The Xp desktop appears. Your Xp Dial-Up Networking connection is now set to ignore all foreign dial tones.

